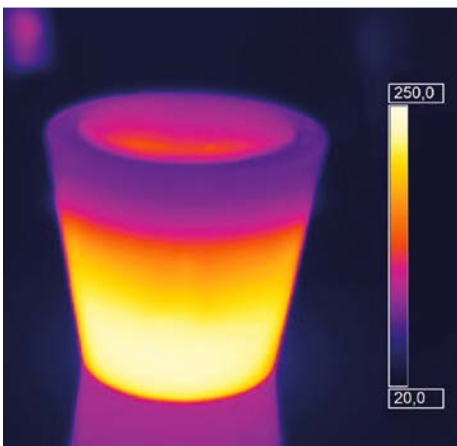
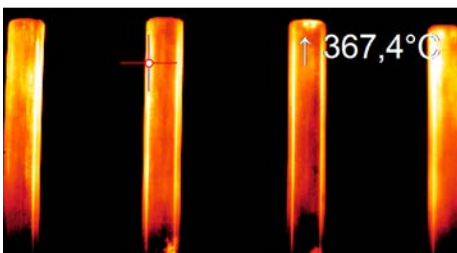
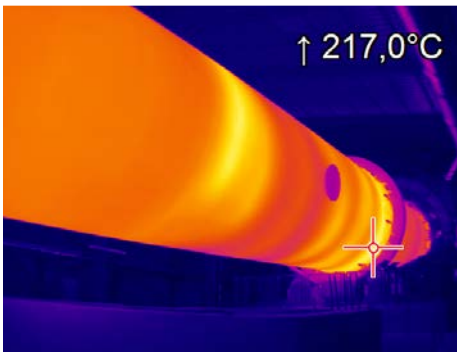


Compact VGA spot finder IR camera



Features:

- Industrial imager with 640 x 480 pixels for exact temperature measurement of -20 °C ... 900 °C
- Small sized rugged camera with motorized focus
- 32 Hz frame rate for monitoring of fast thermal processes
- Extensive ready-to-use package for an attractive price – including versatile image processing software with line scan feature and connection cables



Technical Specifications

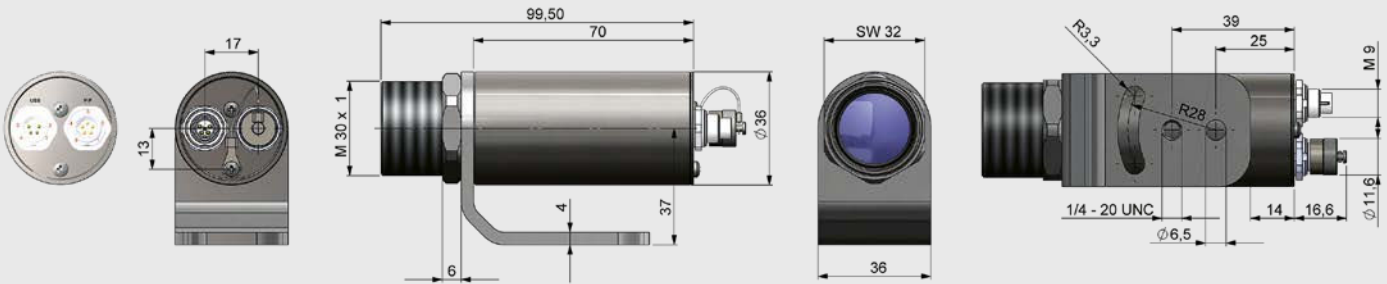
Optical resolution	640 x 480 pixels
Detector	FPA, uncooled (12 µm pitch)
Spectral range	8 – 14 µm
Temperature ranges	-20 ... 100 °C; 0 ... 250 °C; (20) 150 ... 900 °C ¹⁾
Frame rate	32 Hz
Optics (FOV)	22° x 17° (f = 20), 36° x 26° (f = 12.7), 65° x 45° (f = 7.7)
Focus	Motorized focus
Thermal sensitivity (NETD) ²⁾	80 mK
Accuracy	±2 °C or ±2 %, whichever is greater
PC interface	USB 2.0 / optional USB to GigE (PoE) conversion
Process interface (PIF), standard	0–10 V input, digital input (max. 24 V), 0–10 V output
Process interface (PIF), industrial	2 x 0–10 V inputs, digital input (max. 24 V), 3x 0/4–20 mA outputs, 3 x relay (0–30 V / 400 mA), fail-safe relay
Cable length (USB)	1 m (standard), 3 m, 5 m, 10 m, 20 m
Ambient temperature	0 °C ... 50 °C
Enclosure (size / rating)	Ø 36 mm x 100 mm (M30x1 thread) / IP 67 (NEMA 4)
Weight (without mounting bracket)	216 - 220 g, depending on lens
Shock ²⁾ / Vibration ²⁾	IEC 60068-2-27 (25G and 50G) / IEC 60068-2-6 (sinus shaped), IEC 60068-2-64 (broadband noise)
Power supply	USB
Scope of supply	<ul style="list-style-type: none"> • Process imager Xi 640 • USB cable (1 m) • Standard PIF cable (1 m) incl. terminal block • Mounting bracket with tripod thread, mounting nut • Software package optris PIX Connect

¹⁾ Accuracy statement effective from 150 °C

²⁾ For more details see operator's manual

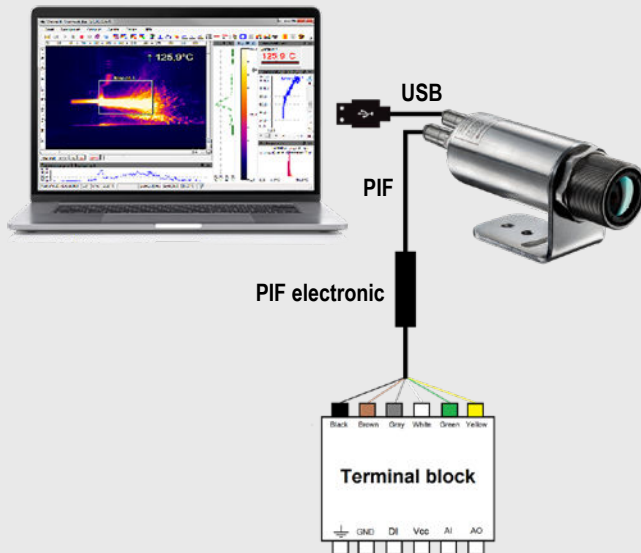
optris Xi 640

Dimensions in mm

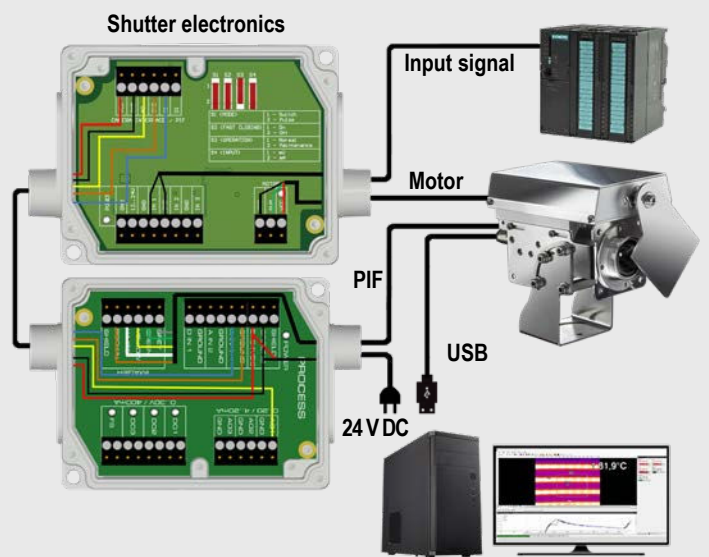


Electrical Installation

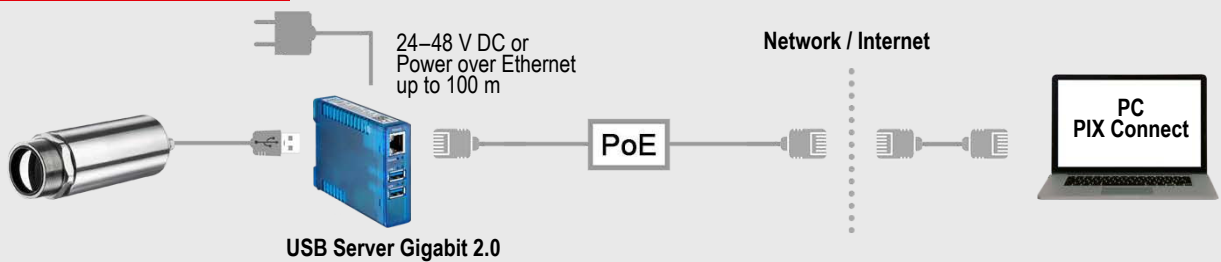
Xi 640 with PIX Connect software + Standard PIF



Xi 640 with industrial PIF and shutter, controlled by a PLC



Xi 640 with USB Server Gigabit 2.0



Accessories

ACXIAPL (Air purge unit) +
ACXIAPLAB (Mounting bracket)



ACXIMW (Water cooled housing)



ACXISCBxx* (Shutter) +
ACXIAPLAB (Mounting bracket)



*) xx = for different cable lengths